

BARTLETT & COOKE

INDEPENDENT ESTATE AGENTS

GOODWOOD HOUSE MILSTEAD CLOSE TADWORTH KT20 5AX



- Luxury Apartment
- Two receptions
- Fitted kitchen with appliances
- Garage
- Two double bedrooms
- Two bathrooms
- Private terrace
- Allocated parking

Price: £360,000 Leasehold

Goodwood House Milstead Close Tadworth Surrey KT20 5AX



A luxury first floor apartment with larger than average accommodation and private sun terrace situated in a secluded location close to Tadworth Village.

The spacious property comprises two reception rooms with direct access to the balcony, two double bedrooms with fitted wardrobes, two bathrooms one being en-suite and fitted kitchen with integral appliances.

The apartment also benefits from ample storage and loft.

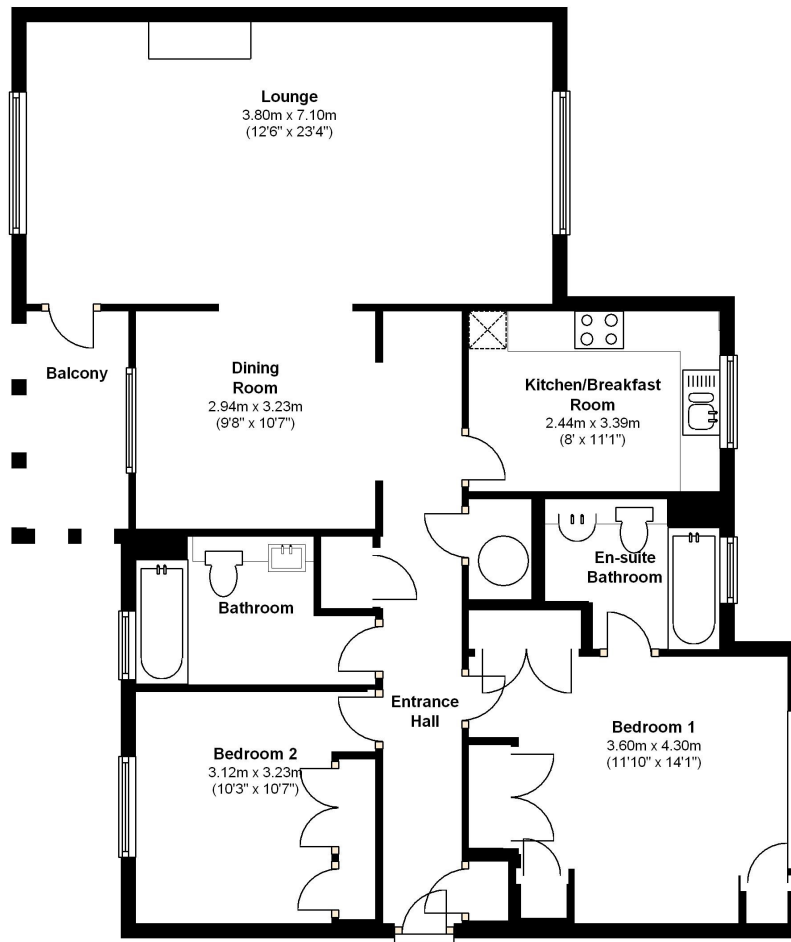
The private terrace overlooks the well kept communal gardens.

Other features include double glazing gas central heating and video entry.

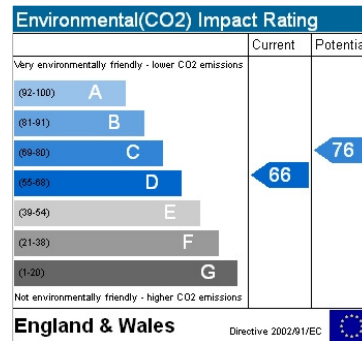
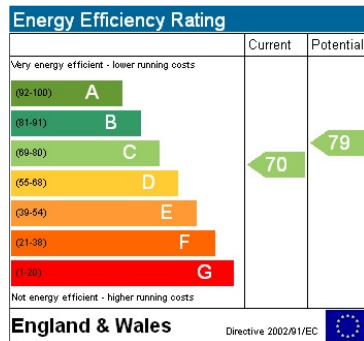
There is a garage and allocated parking.

Milstead Close is situated within a few minutes walk of Tadworth Village with its local shops, restaurants and train station.

Goodwood House Milstead Close Tadworth KT20 5AX



Total area: approx. 96.2 sq. metres (1035.3 sq. feet)



IMPORTANT NOTE; These particulars are intended as a guide and do not form part of any contract. Please check with us any detail which is important to you, particularly if you intend to view the property. We have not checked or tested any service, system, (whether heating, plumbing, electrical etc) appliance, fixture or fitting that may be included with this property. We advise any prospective purchasers to satisfy themselves as to their condition.