

BARTLETT & COOKE

INDEPENDENT ESTATE AGENTS

MARLOWE HOUSE 62 CROSS ROAD TADWORTH KT20 5SU



- Detached character house
- Scope to extend stp
- Village location
- Needing updating
- Dining area
- Three bedrooms
- Secluded gardens
- Master bedroom suite
- Kitchen breakfast room
- Double aspect sitting room

Price: £500,000 Freehold

Marlowe House 62 Cross Road Tadworth KT20 5SU



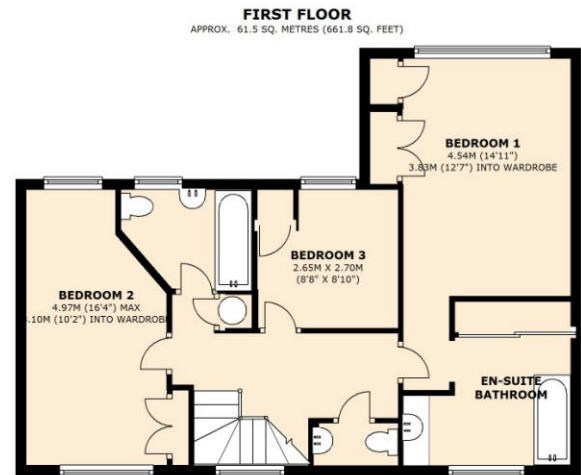
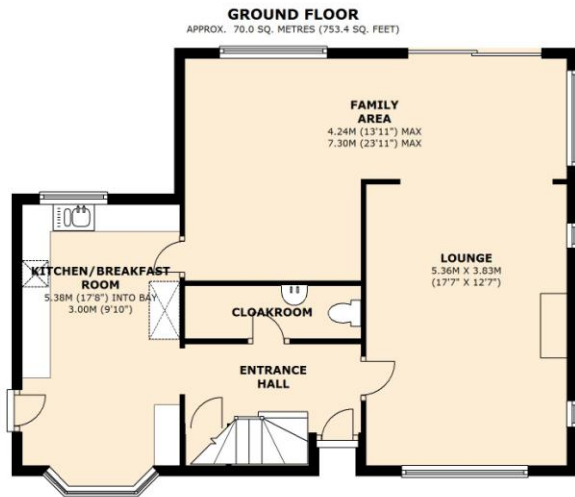
A THREE BEDROOM DETACHED CHARACTER HOUSE LOCATED ON A SECLUDED CORNER PLOT IN A FAVOURED ROAD WITHIN A SHORT WALK OF THE VILLAGE.

SET ON ESTABLISHED GROUNDS THE HOUSE OFFERS EXCELLENT SCOPE TO EXTEND AND IMPROVE (stp).

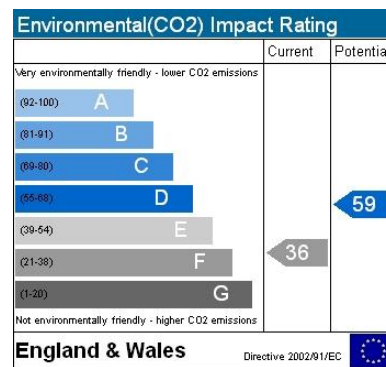
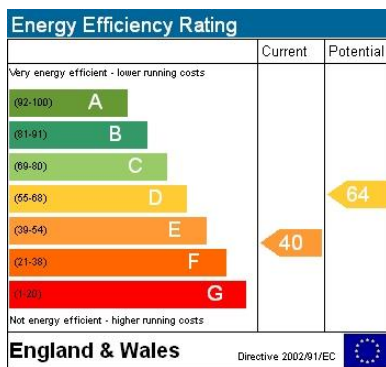
NB: THE SELLERS HAVE HAD PERMISSION GRANTED TO ALLOW A THREE BEDROOM DETACHED HOUSE TO BE BUILT ON LAND TO ONE SIDE OF THE HOUSE WHERE THE GARAGE CURRENTLY STANDS.



Marlowe House 62 Cross Road Tadworth KT20 5SU



TOTAL AREA: APPROX. 131.5 SQ. METRES (1415.2 SQ. FEET)



IMPORTANT NOTE; These particulars are intended as a guide and do not form part of any contract. Please check with us any detail which is important to you, particularly if you intend to view the property. We have not checked or tested any service, system, (whether heating, plumbing, electrical etc) appliance, fixture or fitting that may be included with this property. We advise any prospective purchasers to satisfy themselves as to their condition.