

# **BARTLETT & COOKE**

**INDEPENDENT ESTATE AGENTS**

**TADWORTH PARK, KT20 5TY**



- **Detached house**
- **Three reception rooms**
- **Two bathrooms**
- **Double garage**
- **Gas central heating**
- **Four bedrooms**
- **Kitchen breakfast room**
- **Conservatory**
- **Landscaped gardens**
- **Fully double glazed**

**Price: £569,000 Freehold**

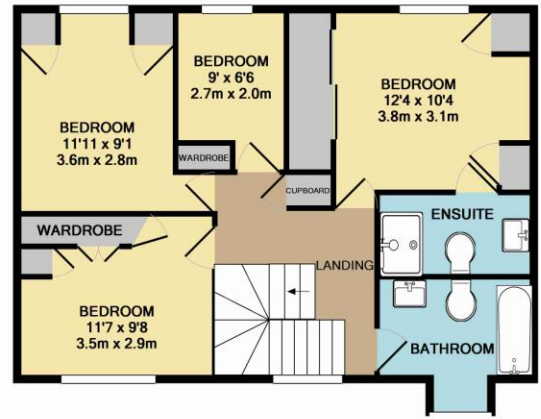
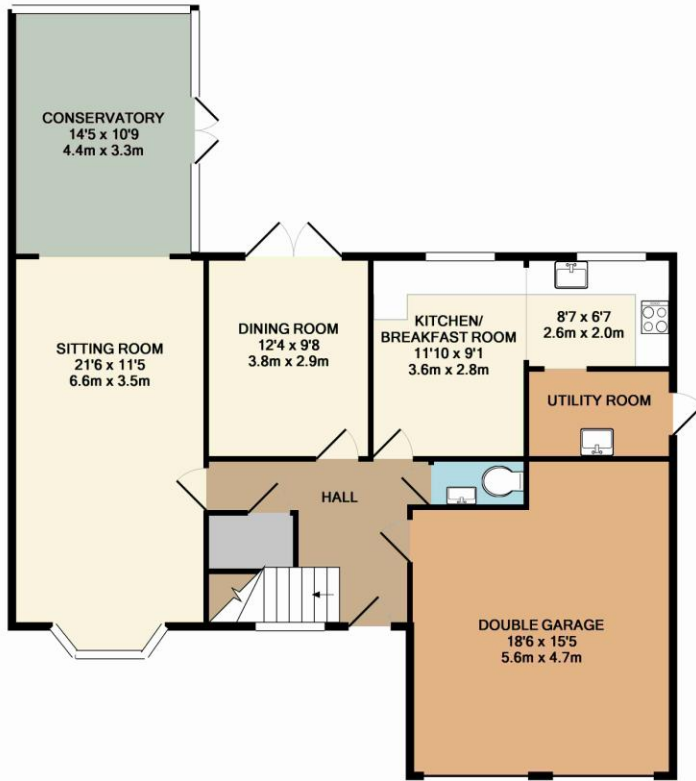
Tadworth, Surrey KT20 5TY



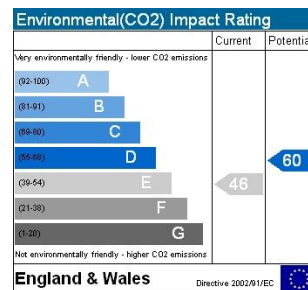
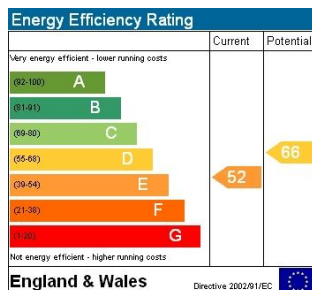
**An attractive and beautifully presented four bedroom detached property situated within this prestigious village development. The property comprises: Entrance hall, cloakroom, large sitting room with fireplace leading to a large conservatory, spacious fitted kitchen-breakfast room with appliances and utility room. Master bedroom with fitted wardrobes and en-suite shower room, three further bedrooms with fitted wardrobes and family bathroom. Gas central heating and double glazing. Double garage with electric doors. Own driveway. Superb landscaped rear garden and attractive front garden.**



# Tadworth KT20 5TY



TOTAL APPROX. FLOOR AREA 1796 SQ.FT. (166.9 SQ.M.)  
 Whilst every attempt has been made to ensure the accuracy of the floor plan contained here, measurements of doors, windows, rooms and any other items are approximate and no responsibility is taken for any error, omission, or mis-statement. This plan is for illustrative purposes only and should be used as such by any prospective purchaser. The services, systems and appliances shown have not been tested and no guarantee as to their operability or efficiency can be given  
 Made with Metropix ©2012



IMPORTANT NOTE; These particulars are intended as a guide and do not form part of any contract. Please check with us any detail which is important to you, particularly if you intend to view the property. We have not checked or tested any service, system, (whether heating, plumbing, electrical etc) appliance, fixture or fitting that may be included with this property. We advise any prospective purchasers to satisfy themselves as to their condition.