

# **BARTLETT & COOKE**

**INDEPENDENT ESTATE AGENTS**

## **WILLOWBANK GARDENS TADWORTH KT20 5DS**



- **FLINT COTTAGE**
- **LARGE SITTING ROOM**
- **FITTED KITCHEN**
- **SINGLE GARAGE**
- **GAS CENTRAL HEATING**
- **TWO DOUBLE BEDROOMS**
- **CONSERVATORY**
- **TWO EN-SUITE SHOWERS**
- **DOUBLE GLAZED**
- **LANDSCAPED GARDEN**

**Price: £305,000 Freehold**

Willowbank Gardens, Tadworth, Surrey KT20 5DS

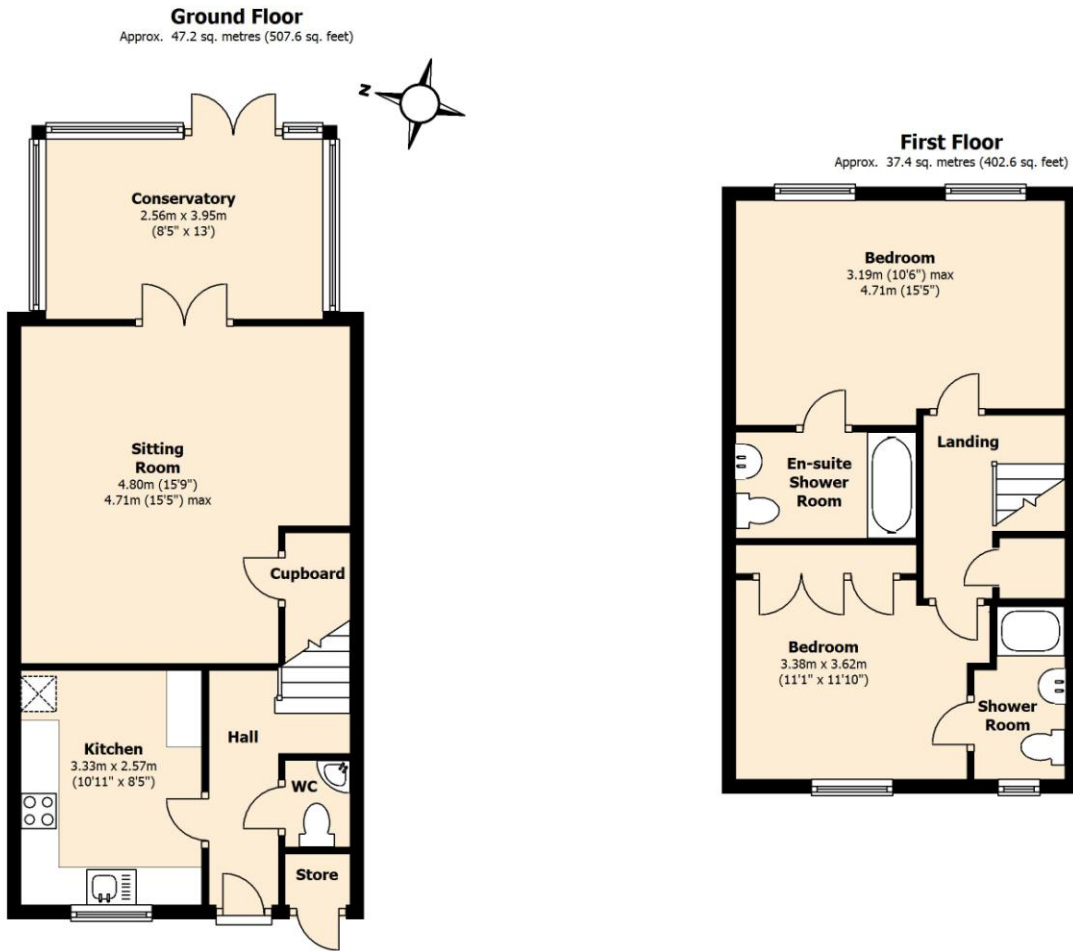


A superbly presented two bedroom terraced modern cottage situated in a small close within a few moments walk of Tadworth village. Built by Charles Church in circa 1996 originally as a three bedroom the current owners have remodelled the property to provide stylish accommodation throughout.

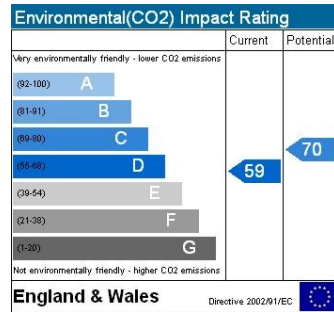
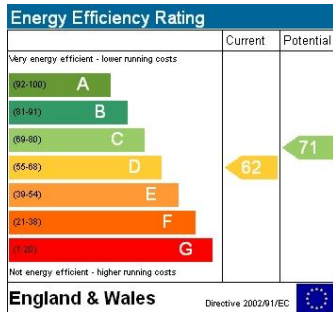
**The property comprises: Entrance hall, refitted cloakroom, fitted kitchen, large sitting room with adjoining good size conservatory. The first floor has bedroom 1 with luxury en-suite shower room, bedroom 2 with wardrobes and en-suite shower room. Further features include gas central heating and full double glazing. Outside there is an attractive landscaped rear garden, ample parking and single garage.**



# Willowbank Gardens, Tadworth, KT20 5DS



Total area: approx. 84.6 sq. metres (910.2 sq. feet)



IMPORTANT NOTE; These particulars are intended as a guide and do not form part of any contract. Please check with us any detail which is important to you, particularly if you intend to view the property. We have not checked or tested any service, system, (whether heating, plumbing, electrical etc) appliance, fixture or fitting that may be included with this property. We advise any prospective purchasers to satisfy themselves as to their condition.