

**MOGADOR**



- Semi-detached cottage
- Sitting-dining room
- Fitted bathroom
- Parking for several vehicles
- Attractive rear gardens
- Two double bedrooms
- Kitchen-breakfast room
- Semi-rural location
- Gas central heating
- Outside utility room/workshop

**Price: £359,000 Freehold**

Mogador, Surrey KT20 7ES



**A two bedroom chalet style character cottage  
situated in a semi rural lane opposite acres of open countryside.**

The property benefits from a very attractive rear garden backing open land and large frontage with hard standing for several cars.

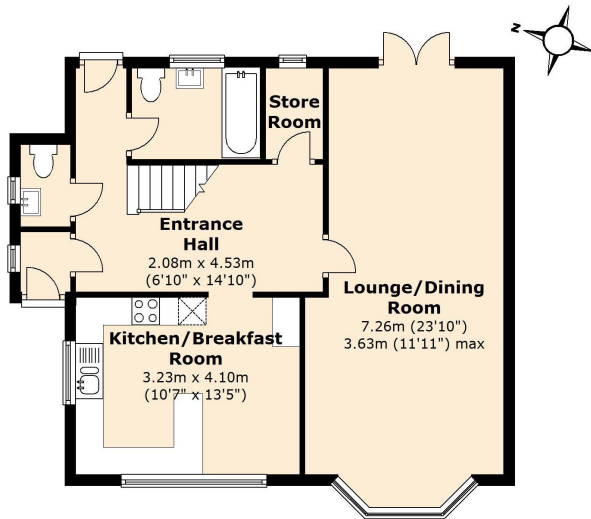
The property comprises: Entrance porch, spacious entrance hall with walk in storage cupboard, cloakroom, downstairs fitted bathroom, sitting-dining room with attractive feature fireplace and double doors leading to the garden. The first floor has master bedroom with fitted wardrobes and good size bedroom two. There are excellent views to both front and rear. Outside there is a very useful covered storage area leading to a utility room and storage shed behind. The very attractive and well stocked rear garden has mature fruit trees and patio area and backs onto open land. The good size frontage has front lawn garden and large driveway with ample parking. Mogador is located within easy reach of the nearby A217 and M25 road links.



# Mogador, KT20 7ES

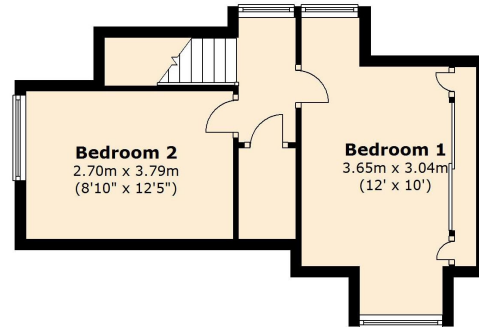
## Ground Floor

Approx. 59.2 sq. metres (637.1 sq. feet)

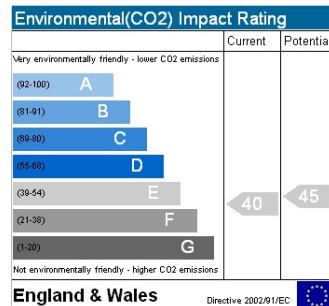
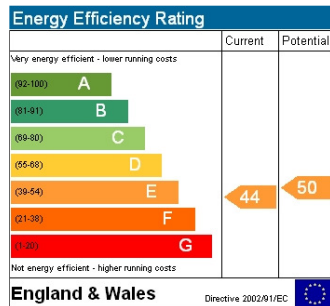


## First Floor

Approx. 29.9 sq. metres (322.3 sq. feet)



Total area: approx. 89.1 sq. metres (959.4 sq. feet)



IMPORTANT NOTE; These particulars are intended as a guide and do not form part of any contract. Please check with us any detail which is important to you, particularly if you intend to view the property. We have not checked or tested any service, system, (whether heating, plumbing, electrical etc) appliance, fixture or fitting that may be included with this property. We advise any prospective purchasers to satisfy themselves as to their condition.