

# **BARTLETT & COOKE**

**INDEPENDENT ESTATE AGENTS**

**DORKING ROAD  
TADWORTH KT20 5SA**



- Character detached property
- Spacious living accommodation
- Luxury kitchen-breakfast room
- Single garage
- Southerly backing garden
- Four double bedrooms
- Two bathrooms and cloakroom
- Private location
- Gas central heating
- Excellent condition

**Price: £645,000 Freehold**

Dorking Road, Tadworth Surrey KT20 5SA

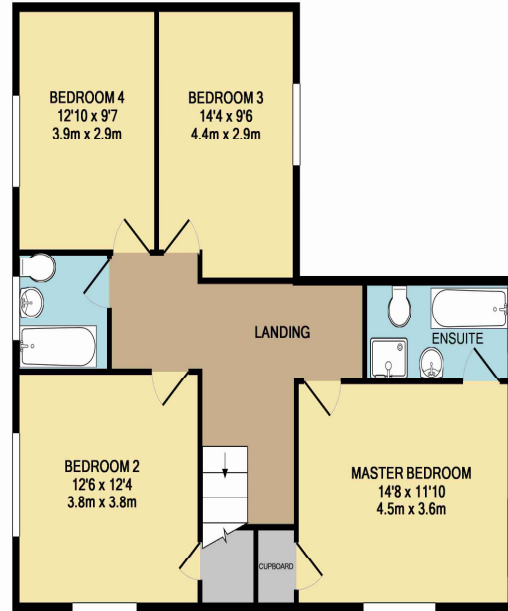
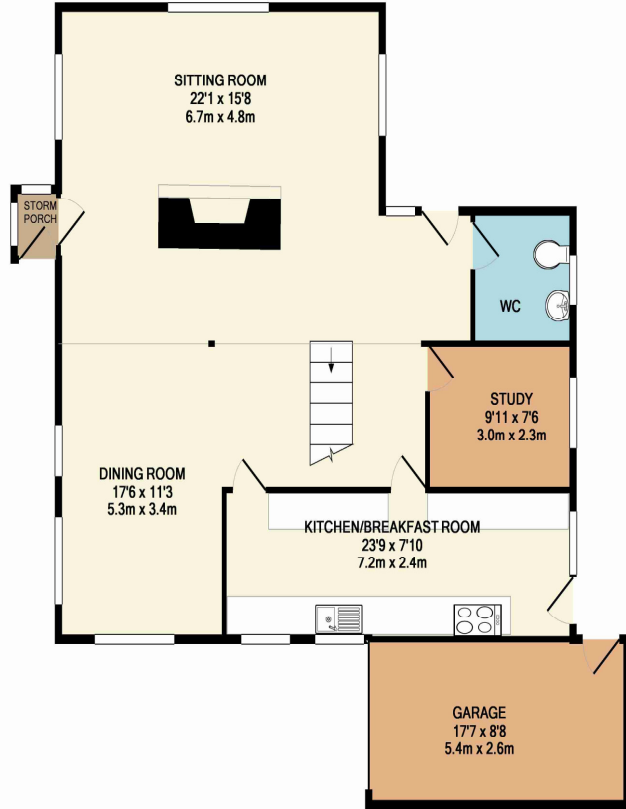


A superbly presented and updated character property situated in a private location on the edge of Tadworth Village. The property offers spacious accommodation throughout with large living area and four double bedrooms, refitted kitchen and bathrooms.

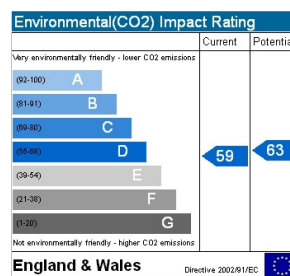
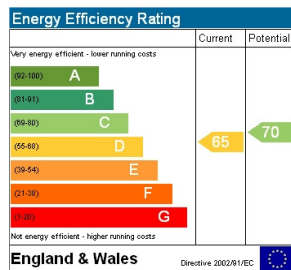
The property comprises: Entrance hall, cloakroom, study, sitting room with large inglenook style fireplace, dining room, and fitted kitchen breakfast room with integrated appliances. The first floor has Master bedroom with luxury en-suite with bath and shower, three further double bedrooms and family bathroom. Outside there is an attractive southerly backing rear garden with patio area and fish pond, off street parking and garage. Nearby Tadworth Village has a wide range of local shops and train station and good local schools. More comprehensive shopping can be found at nearby Banstead Village and Epsom.



# Dorking Road, Tadworth KT20 5SA



**TOTAL APPROX. FLOOR AREA 2036 SQ.FT. (189.1 SQ.M.)**  
 \*Every effort has been made to ensure the accuracy of the floor plan contained here. Measurements of doors, windows, escape and any other fixed size appliances and the responsibility to take any error, omissions or other inaccuracies, the plan is for illustrative purposes only and not to be relied on for any prospective purchase. The services, systems and appliances shown here may have been tested and compared to their capacity or efficiency use the plan. Made with [www.floorplan.com](http://www.floorplan.com)!



**IMPORTANT NOTE;** These particulars are intended as a guide and do not form part of any contract. Please check with us any detail which is important to you, particularly if you intend to view the property. We have not checked or tested any service, system, (whether heating, plumbing, electrical etc) appliance, fixture or fitting that may be included with this property. We advise any prospective purchasers to satisfy themselves as to their condition.